

SCCG50 & SCCP50 Service Parts

This is the illustrated parts list for the SCCG50M and the SCCP50M Residential Ice Machines.

When ordering a service part, always refer to the complete model number of the equipment being repaired to be sure of obtaining the correct part. Many times there are slight differences between models, and having the complete model number will aide in selecting the correct part.

The condenser fan motor, fan blade, fan motor brackets and condenser shroud changed in August 2009. The model number also changed to an A series: SCCG50MA-1. and SCCP50MA-1. In early 2019 the compressor change along with some of the EEPROM values in the controller represented in the B series: SCCG50MB-1 and SCCP50MB-1

Painted models were discontinued in 2013.

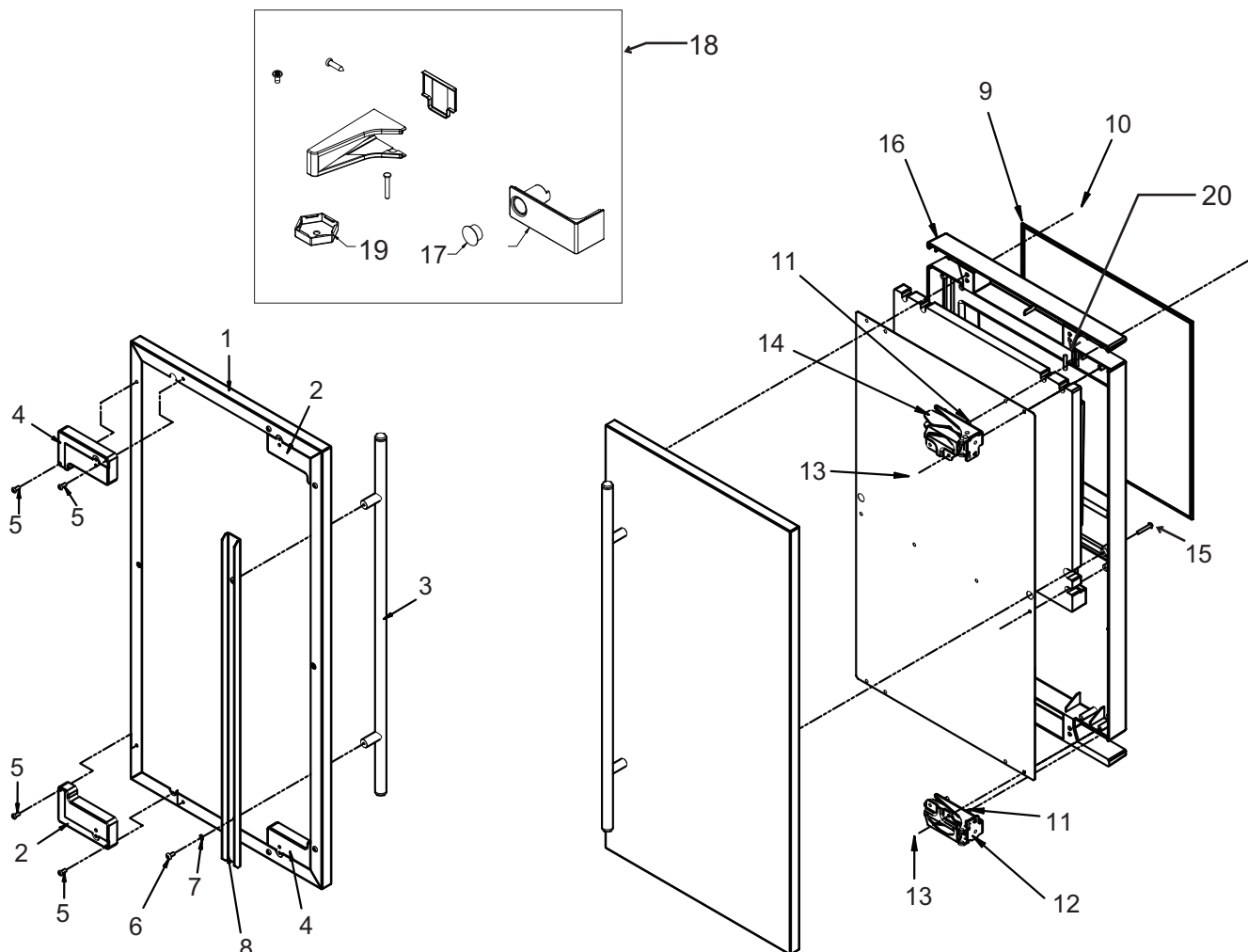
Cabinet changed November 2014 to add service panel.

Table of Contents

| | |
|------------------------------------|--------|
| Door | Page 2 |
| Cabinet | Page 3 |
| Reservoir and Spray Pump | Page 4 |
| Refrigeration. | Page 5 |
| Under Bin Parts | Page 6 |
| Control System | Page 7 |
| Schematic Diagram | Page 8 |
| Wiring Diagram | Page 9 |

SCCG50 & SCCP50 Service Parts

Door

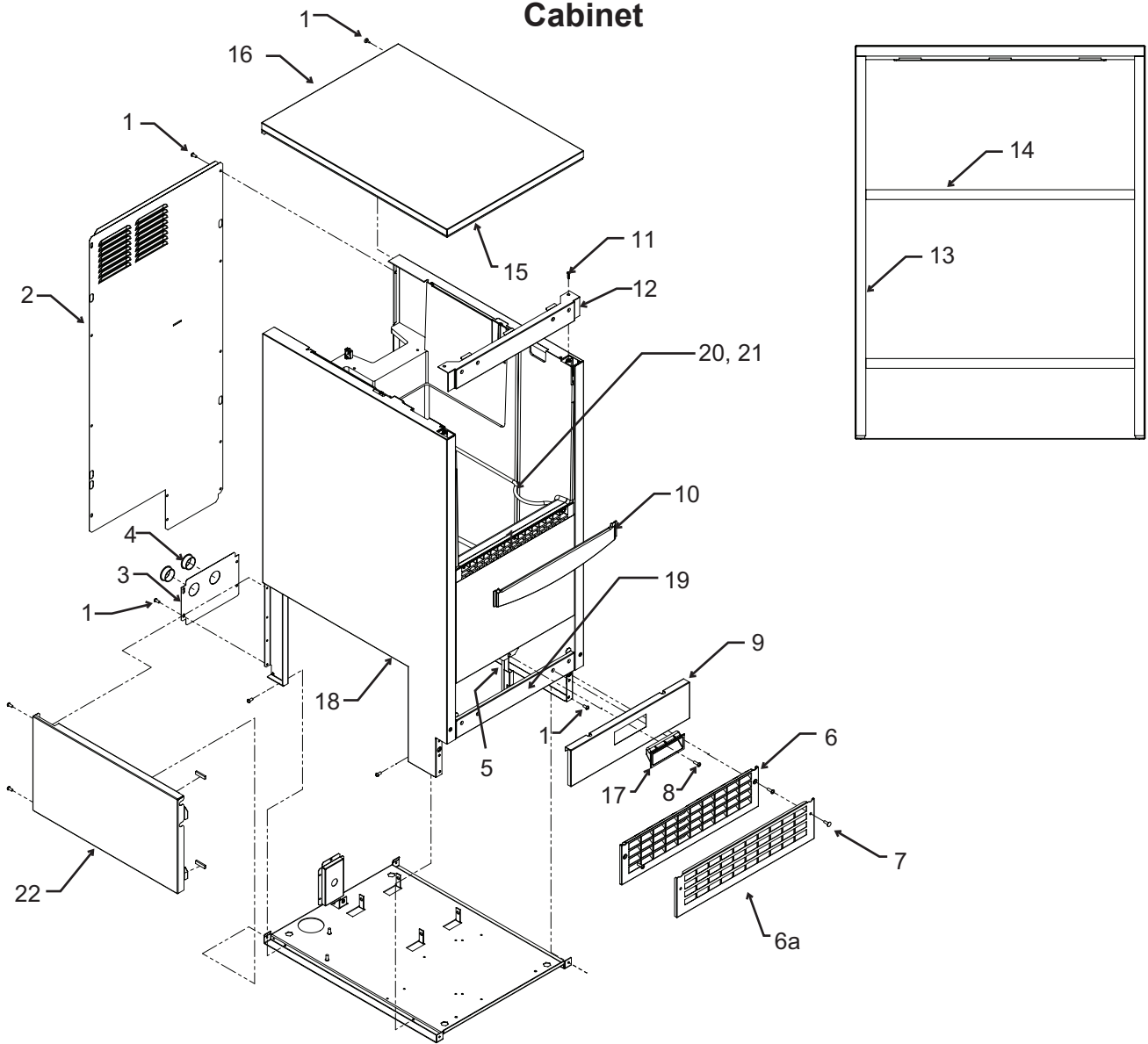


Items 17 and 19 included with item 18, package shipped loose in bin.

| Item Number | Part Number | Description | Item Number | Part Number | Description |
|-------------|-------------|---|-------------|-------------|--|
| 1 | | Door panel kits. Kits include items 1 thru 8. | 7 | 03-1410-07 | Lockwasher |
| | KDFW | White panel, white handle | 8 | A39390-001 | Support bracket |
| | KDFWS | White panel, SS handle | 9 | 13-0949-03 | Door gasket |
| | KDFB | Black panel, black handle | 10 | 03-1404-40 | Screw |
| | kDFBS | Black panel, SS handle | 11 | 03-3818-01 | Screw - hinge to cabinet |
| | KDFS | SS panel, SS handle | 12 | 02-3866-04 | Hinge - top left/bottom right |
| 2 | 02-4433-01 | Corner block, RH | 13 | 03-1404-24 | Screw - hinge to door |
| 3 | 02-4430-42 | Handle, white | 14 | 02-3866-03 | Hinge |
| | 02-4430-52 | Handle, black | 15 | 03-1403-67 | Screw |
| | 02-4430-01 | Handle, SS | 16 | A39513-001 | Door assembly, does not include door panel or hinges |
| 4 | 02-4433-02 | Corner block, LH | 17 | 02-1875-07 | Hole plug |
| 5 | 03-1531-01 | Screw | 18 | 02-4474-01 | Hinge package |
| 6 | 03-3811-01 | Screw | 19 | 02-4415-20 | Leg cap, pack of 4 |
| | | | 20 | 11-0580-01 | Magnet, door switch Top Is indicated by paint mark. |

SCCG50 & SCCP50 Service Parts

Cabinet

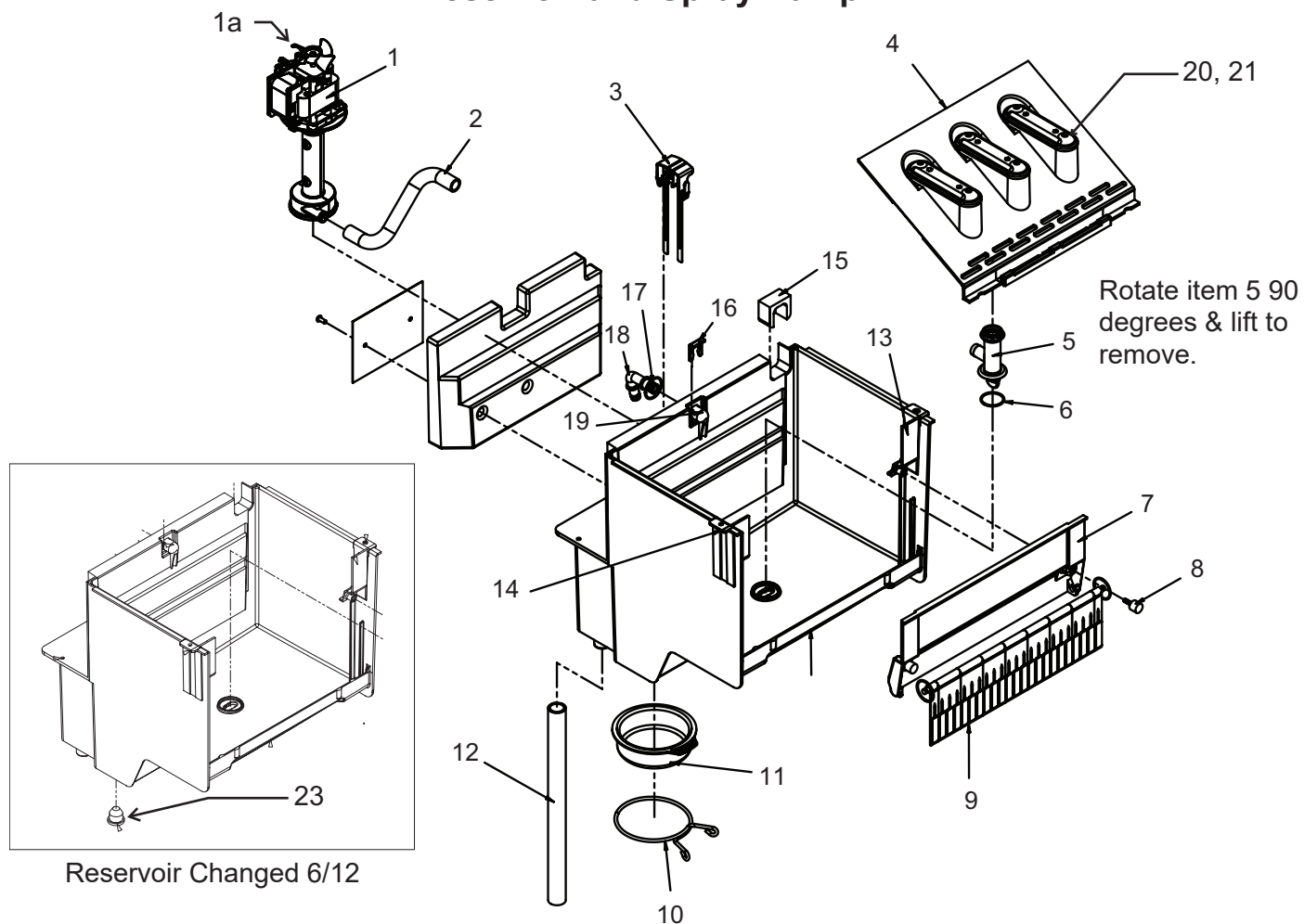


| Item Number | Part Number | Description |
|-------------|-------------|---------------------------------|
| 1 | 03-1404-10 | Screw |
| 2 | A39363-001 | Back panel |
| 3 | A39389-001 | Utility routing bracket |
| 4 | 12-1213-11 | Snap bushing |
| 5 | A39392-001 | Srv panel mntg bracket |
| 6 | 02-4390-01 | Kickplate |
| 6a | A39469-001 | Kickplate, SS for outdoor model |
| 7 | 03-1403-86 | Screw |
| 8 | 02-4441-01 | Panel handle |
| 9 | A39381-003 | Service panel, SS |
| 10 | 02-4392-01 | Bin edging |
| 11 | 03-3836-03 | Screw |
| 12 | A39364-003 | Top hinge brkt, RH SS |
| | A39364-007 | Top hinge brkt, L & R SS* |
| 12a | 03-3813-01 | Screw to fill holes |
| 13 | 13-0943-05 | Gasket |
| 14 | 13-0943-03 | Gasket strip |
| 15 | 02-4426-01 | Insulation pad |
| 16 | A39362-003 | Top panel, SS |
| 17 | 02-4441-01 | Panel handle |
| 18 | A39618-001 | SS cabinet & bin |
| 19 | A39385-003 | Btm hinge brkt, L & R SS** |
| 20 | A34816-001 | Bin stat bracket/scoop hldr |
| 21 | 02-4391-01 | Scoop |
| 22 | A39615-001 | Service panel |

* changed 1/12 to add left and right hinge mounting.
Painted parts no longer available.

SCCG50 & SCCP50 Service Parts

Reservoir and Spray Pump

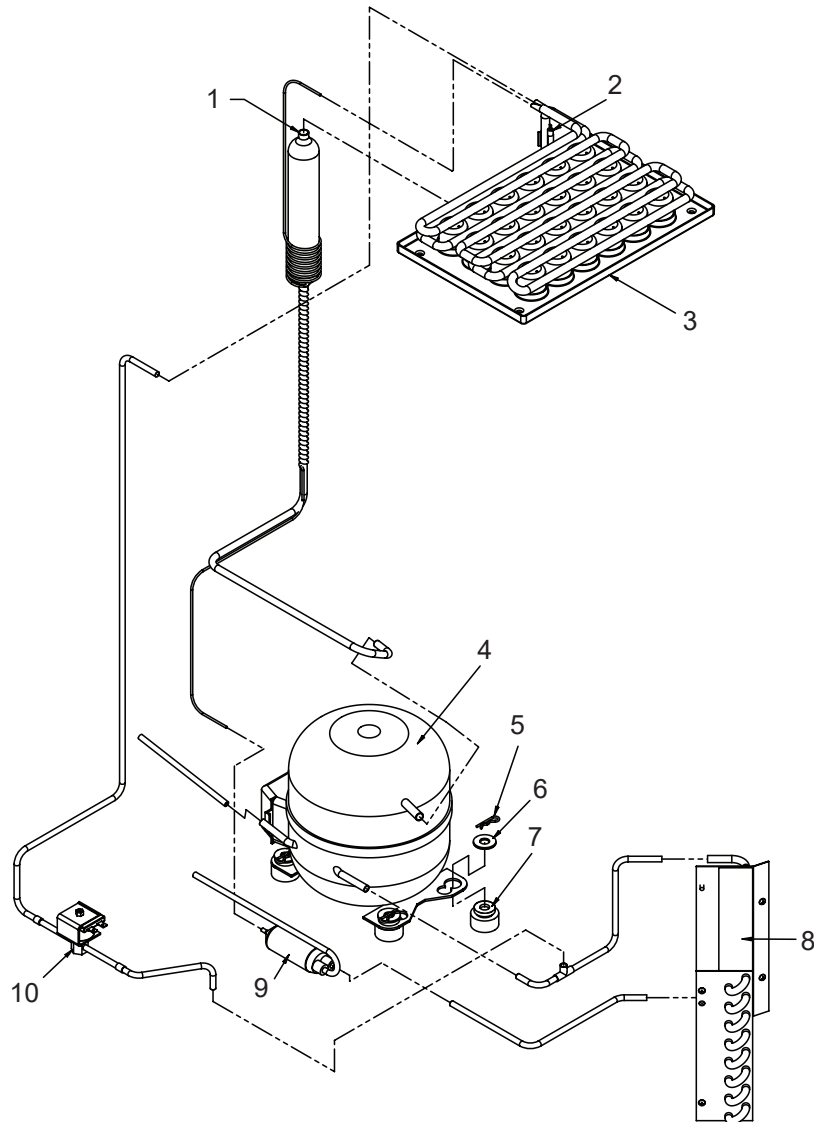


Reservoir Changed 6/12

| Item Number | Part Number | Description | Part Number | Description |
|-------------|-------------|---------------------------------|--|---|
| 1 | 12-2986-21 | Water pump, incl item 1a | 15 | 02-4475-01 Grommet |
| 1a | 02-1719-00 | Fan blade | 16 | 02-4381-03 Clip |
| 2 | 02-4379-01 | Pump discharge hose | 17 | 13-0617-04 O-ring |
| 3 | A39030-023 | Water probe | 18 | 02-4381-01 Barbed fitting |
| 4 | 02-4371-03 | Spray platform | 18a | 02-0694-00 Clamp |
| 5 | 02-4368-01 | Water Tee | 19 | 02-4381-02 Spout |
| 6 | 13-0617-11 | O-ring | 20 | 02-4373-01 O-ring |
| 7 | 02-4365-01 | Front bracket | 21 | 02-4370-21 Spray nozzle, kit. Set of 3 nozzles, o-rings, screws and nuts. |
| 8 | 03-3892-01 | Thumb screw | Item 22 is a plastic cover that fits over the evaporator tubing and cups. It was added in 2013 | |
| 9 | A39357-001 | Curtain | 22 | 02-4726-01 Evaporator cover |
| 10 | 02-4383-01 | Clamp, not used after 6/12 | 23 | 13-0840-01 Drain plug, changed 6/12. |
| 11 | 02-4369-01 | Drain cap, not used after 6/12. | | |
| 12 | 02-4428-01 | Drain tube | | |
| 13 | 02-4375-02 | Evap bracket, left | | |
| 14 | 02-4375-01 | Evap bracket, right | | |

SCCG50 & SCCP50 Service Parts

Refrigeration

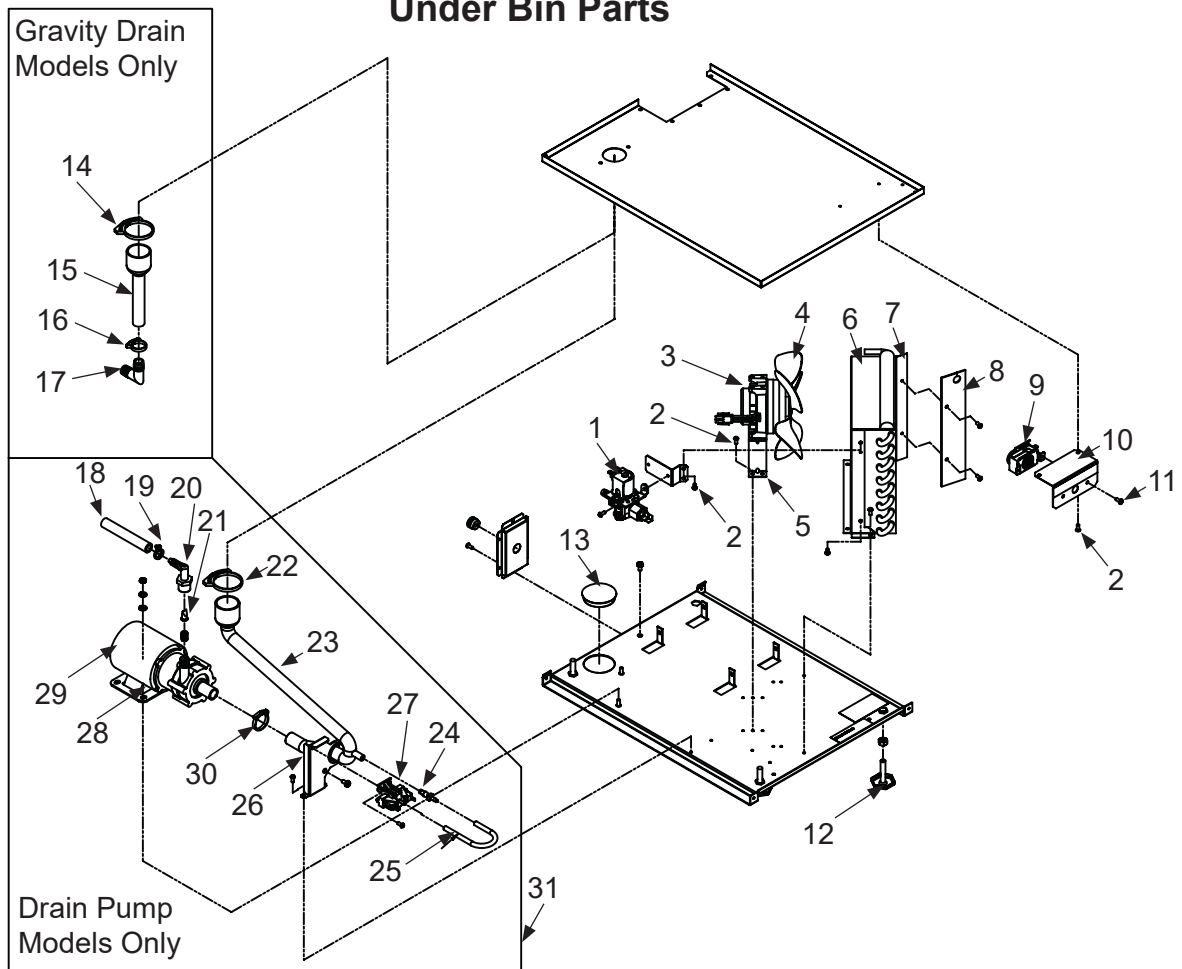


| Item Number | Part Number | Description | Item Number | Part Number | Description |
|-------------|-------------|---|-------------|-------------|---------------|
| 1 | A39384-001 | Suction line accumulator assy | 6 | 03-1407-08 | Washer |
| 2 | 11-0577-01 | Thermistor | 7 | 18-4700-28 | Grommet |
| 2a | 03-1711-01 | Thermister holder | 8 | 18-8940-01 | Condenser |
| 3 | 02-4376-01 | Evaporator | 9 | 16-1219-01 | Drier |
| 4 | 18-8939-21 | Compressor* A model Tecumseh TPB0413Y-AA | 10 | 11-0562-21 | Hot gas valve |
| 4 | 18-8994-21 | Compressor* B model Tecumseh AE3425Y-AA1A | 10a | 11-0562-22 | HGV coil |
| 4a | 18-8939-51 | A & B Model Overload | | | |
| 4b | 18-8939-52 | A Model Relay | | | |
| 4bb | 18-8994-52 | B Model Relay | | | |
| 5 | 03-3821-01 | Clip | | | |

*Compressors includes overload, relay and drier

SCCG50 & SCCP50 Service Parts

Under Bin Parts

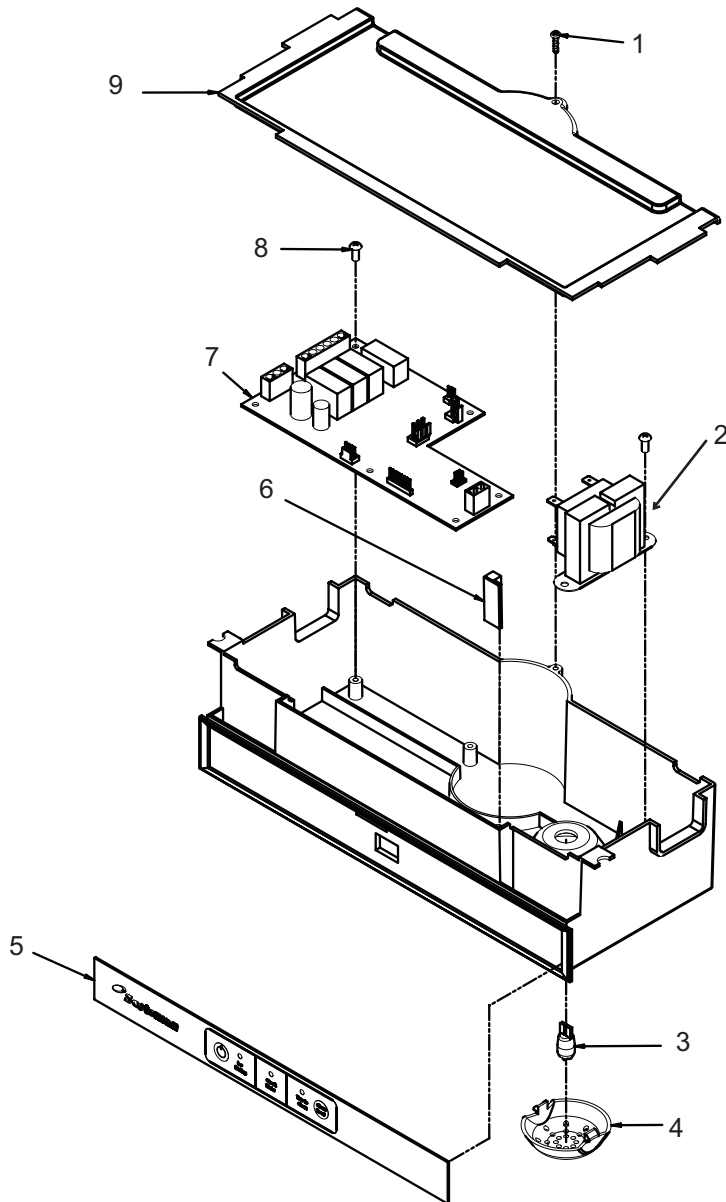


| Item Number | Part Number | Description |
|--|-------------|------------------------------|
| 1 | 12-2990-01 | Inlet water sol valve |
| 1a | 05-0590-01 | Full Hose Req. 4ft |
| 2 | 03-1531-01 | Screw |
| 3 | 12-3024-01 | Fan motor |
| 4 | 18-8941-01 | Fan blade |
| | 02-4197-01 | Fan blade, A,B series |
| 5 | A39555-001 | Fan motor bracket |
| A39555-001 bracket attaches to shroud. Use on prior models requires 2 brackets & A39359-001. | | |
| | A39556-001 | Fan motor bracket A,B series |
| 6 | A39359-001 | Fan shroud |
| | A39460-001 | Fan shroud, A series |
| 7 | 13-0909-01 | Gasket, order 1 & cut to fit |
| 8 | 02-4450-01 | Air baffle |
| 9 | 11-0617-21 | Thermostat |
| 10 | A39379-001 | Thermostat bracket |
| 11 | 03-1403-16 | Screw |
| 12 | 03-1608-01 | Leg leveler |
| 12a | 02-4415-01 | Leg cap |
| 13 | 02-1875-18 | Hole plug |
| 14 | 02-2814-13 | Hose clamp |
| 15 | 02-4412-01 | Drain hose |
| 16 | 02-2814-08 | Hose clamp |
| 17 | 16-0671-01 | Elbow |
| 18 | A37334-001 | Discharge hose |
| 19 | 02-0534-02 | Hose clamp |
| 20 | 02-3522-01 | Elbow |
| 21 | 02-3374-01 | Check valve |
| 22 | 02-2814-13 | Hose clamp |
| 23 | 02-4413-01 | Drain tube |
| 24 | 02-3406-01 | Barbed connector |
| 25 | 05-0591-01 | Switch hose |
| 26 | A39370-001 | Switch bracket |
| 27 | 11-0504-01 | Pressure switch |
| 28 | 03-3904-01 | Spring |
| 29 | 12-2503-21 | Pump & motor only |
| 29a | 12-3001-01 | Drain pump harness |
| 30 | 02-2814-10 | Hose clamp |
| 31 | A39462-021* | Pump kit* |

***The complete kit shouldn't be used for warranty purposes without an authorization number given from tech support.**

SCCG50 & SCCP50 Service Parts

Control System



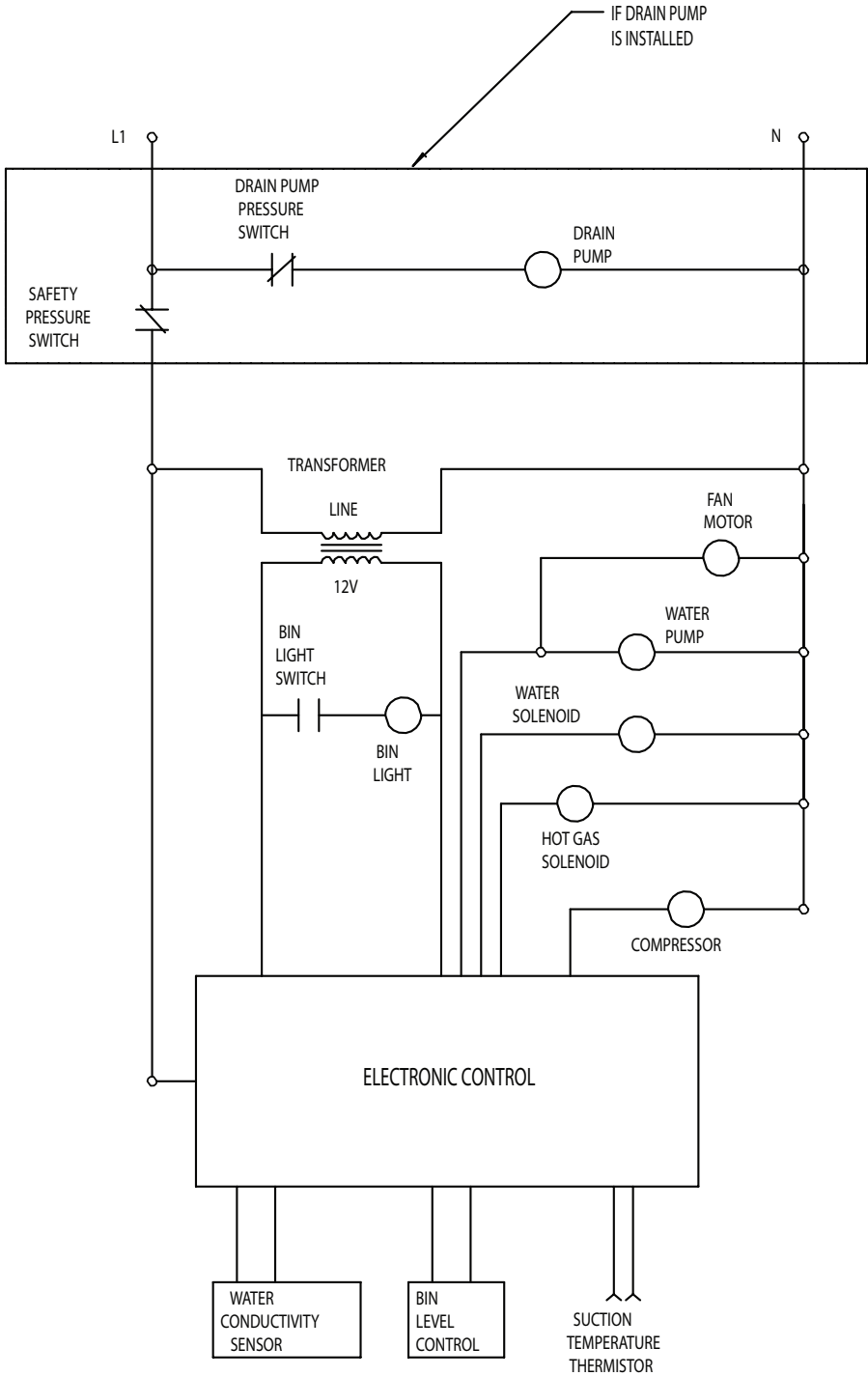
| Item Number | Part Number | Description |
|-------------|-------------|---|
| 1 | 03-3836-03 | Screw |
| 2 | 12-2924-01 | Transformer |
| 3 | 12-3077-01 | Bulb |
| 4 | 02-4380-01 | Light cover |
| 5 | 11-0574-01 | Switch panel |
| 6 | 12-3076-01 | Bin light switch, bulb socket and harness |
| 7 | 11-0573-25 | Controller A Model |
| | 11-0663-21 | Controller B Model |
| 8 | 03-1531-01 | Screw |
| 9 | 02-4386-01 | Cover |

Not Shown:

| | | |
|--|------------|---------------------------|
| NS1 | 12-3003-01 | Bin stat harness |
| NS2 | 12-3000-02 | Hi voltage harness, lower |
| NS3 | 12-3000-01 | Hi voltage harness, upper |
| Note: If replacing the lower harness, always replace the upper one too. | | |
| NS4 | 12-2992-01 | Water sensor harness |
| NS5 | 12-1638-21 | Power Cord |

SCCG50 & SCCP50 Service Parts

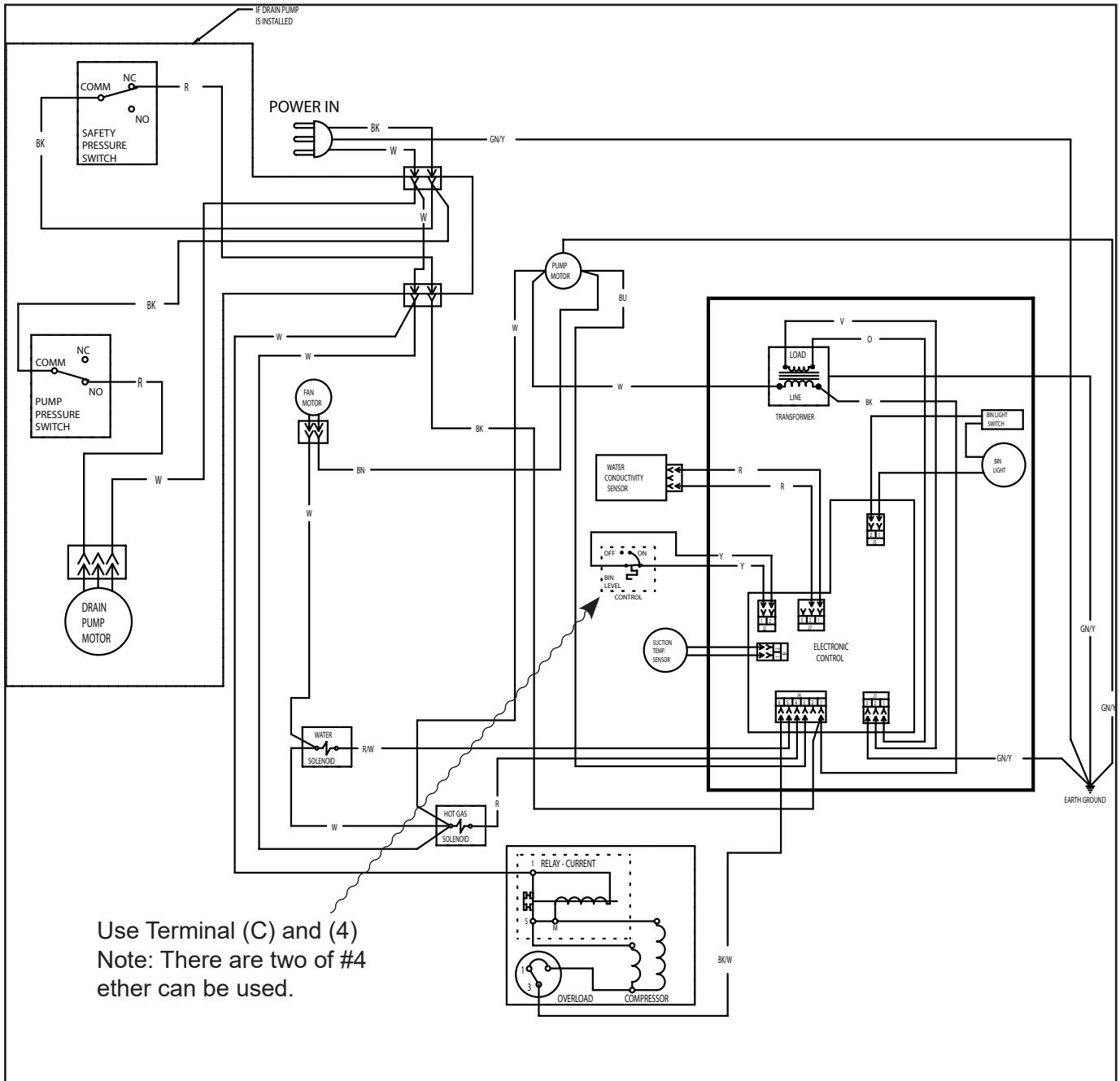
Schematic Diagram



SWITCHES ON THIS UNIT
SHOWN IN FREEZE CYCLE
WITH DRAIN PUMP IN OPERATION
AND BIN DOOR CLOSED

SCCG50 & SCCP50 Service Parts

Wiring Diagram



SCOTSMAN ICE SYSTEMS
101 Corporate Woods Parkway, Vernon Hills, IL 60061
www.scotsman-ice.com