

# SRN110 Service Parts

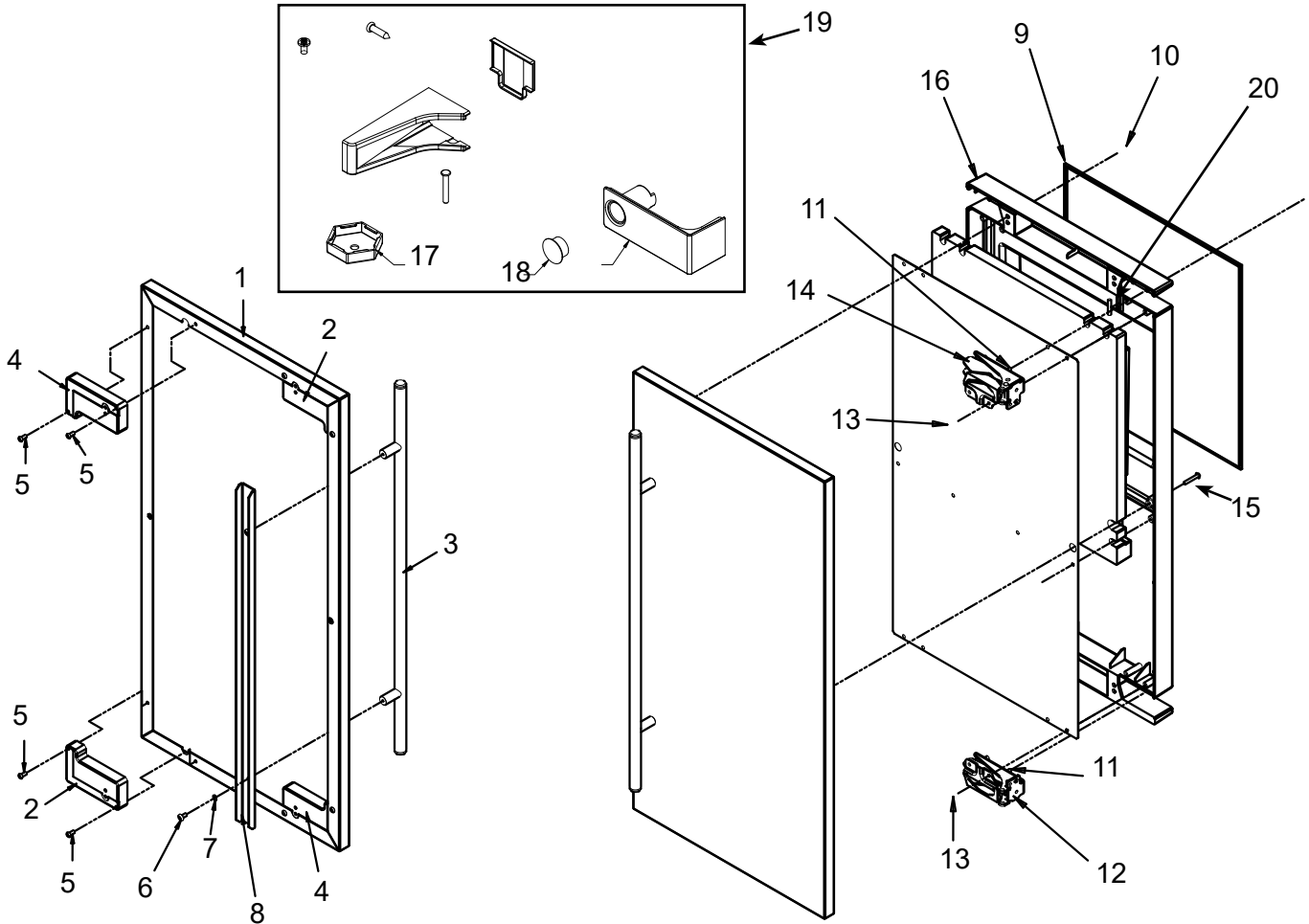
This is the illustrated parts list for the SRN110. There are two models. One uses a gravity drain and the other includes a drain pump. It is possible that some units could have had drain pumps field installed in them.

## Contents

|                                        |    |
|----------------------------------------|----|
| Door Components .....                  | 2  |
| Cabinet .....                          | 3  |
| Storage Bin and Ice Chute .....        | 4  |
| Reservoir, Water Sensor and Misc. .... | 5  |
| Refrigeration .....                    | 6  |
| Under Bin Parts .....                  | 7  |
| Ice Making Section .....               | 8  |
| Control System .....                   | 9  |
| Wiring Diagram .....                   | 10 |
| Schematic Diagram .....                | 11 |

# SRN110 Service Parts

## Door Components

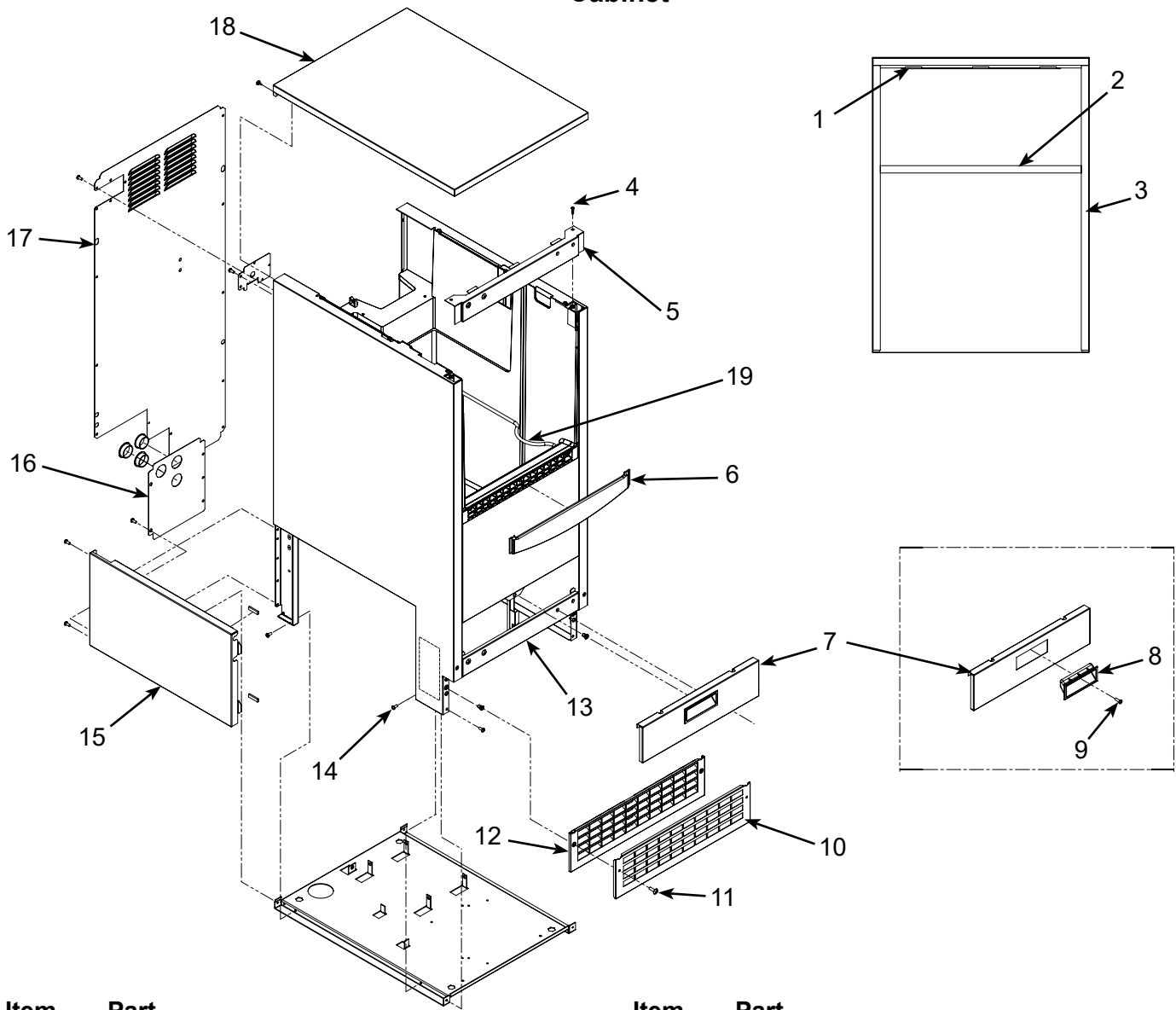


| Item Number | Part Number | Description                                                         |
|-------------|-------------|---------------------------------------------------------------------|
| 1           | KDFS        | SS panel, SS handle<br>Door panel kit. Kit includes items 1 thru 8. |
| 2           | 02-4433-01  | Corner block, RH                                                    |
| 3           | 02-4430-01  | Handle, SS                                                          |
| 4           | 02-4433-02  | Corner block, LH                                                    |
| 5           | 03-1531-01  | Screw                                                               |
| 6           | 03-3811-01  | Screw                                                               |
| 7           | 03-1410-07  | Lockwasher                                                          |
| 8           | A39390-001  | Support bracket                                                     |

| Item Number | Part Number | Description                                          |
|-------------|-------------|------------------------------------------------------|
| 11          | 03-3818-01  | Screw - hinge to cabinet                             |
| 12          | 02-3866-04  | Hinge - top left/bottom right                        |
| 13          | 03-3818-01  | Screw - hinge to door                                |
| 14          | 02-3866-03  | Hinge                                                |
| 15          | 03-1404-24  | Screw                                                |
| 16          | A39513-001  | Door assembly, does not include door panel or hinges |
| 17          | 02-4415-20  | Leg cap, pack of 4                                   |
| 18          | 02-1875-07  | Hole plug                                            |
| 19          | 02-4474-01  | Hinge package                                        |
| 20          | 11-0580-01  | Magnet, door switch                                  |

# SRN110 Service Parts

## Cabinet



| Item Number | Part Number | Description                   |
|-------------|-------------|-------------------------------|
| 1           | 13-0943-03  | Gasket, top panel             |
| 2           | 13-0943-04  | Gasket, top panel             |
| 3           | 13-0943-05  | Gasket, top panel             |
| 4           | 03-3836-03  | Screw                         |
| 5           | A39364-003  | Top hinge brckt, hinge right  |
|             | A39364-007  | Top hinge brckt, hinge L or R |
| 6           | 02-4392-01  | Inlay                         |
| 7           | A39381-003  | Front service panel           |
| 8           | 02-4441-01  | Handle                        |
| 9           | 03-1403-86  | Screw                         |
| 10          | A39469-001  | Kick plate cover              |
| 11          | 03-3813-02  | Screw                         |
| 12          | 02-4390-01  | Kick plate                    |
| 13          | A39385-003* | Btm hinge brckt, hinge L or R |
| 14          | 03-1531-01  | Screw                         |
| 15          | A39615-001  | Side service panel            |

| Item Number | Part Number | Description           |
|-------------|-------------|-----------------------|
| 16          | A41651-001  | Drain panel           |
| 17          | A41648-001  | Back panel            |
| 18          | A39362-003  | Top panel only        |
| 18a         | 02-4426-01  | Insulation, top panel |
| 19          | A34816-001  | Scoop holder          |

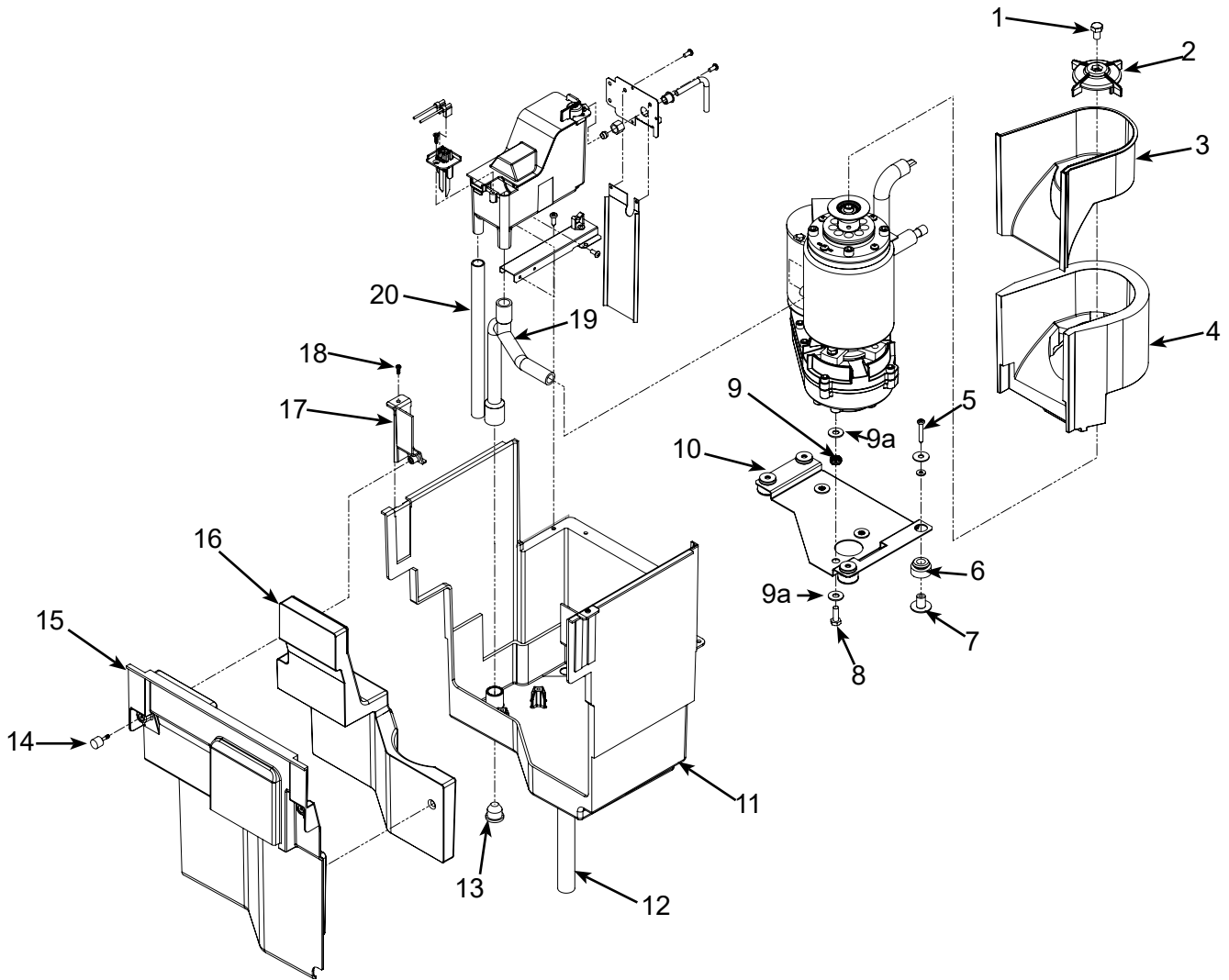
### Not Shown:

02-4391-03 Scoop

\* Hinge mounting changed 1/12 to allow left or right mounting.

# SRN110 Service Parts

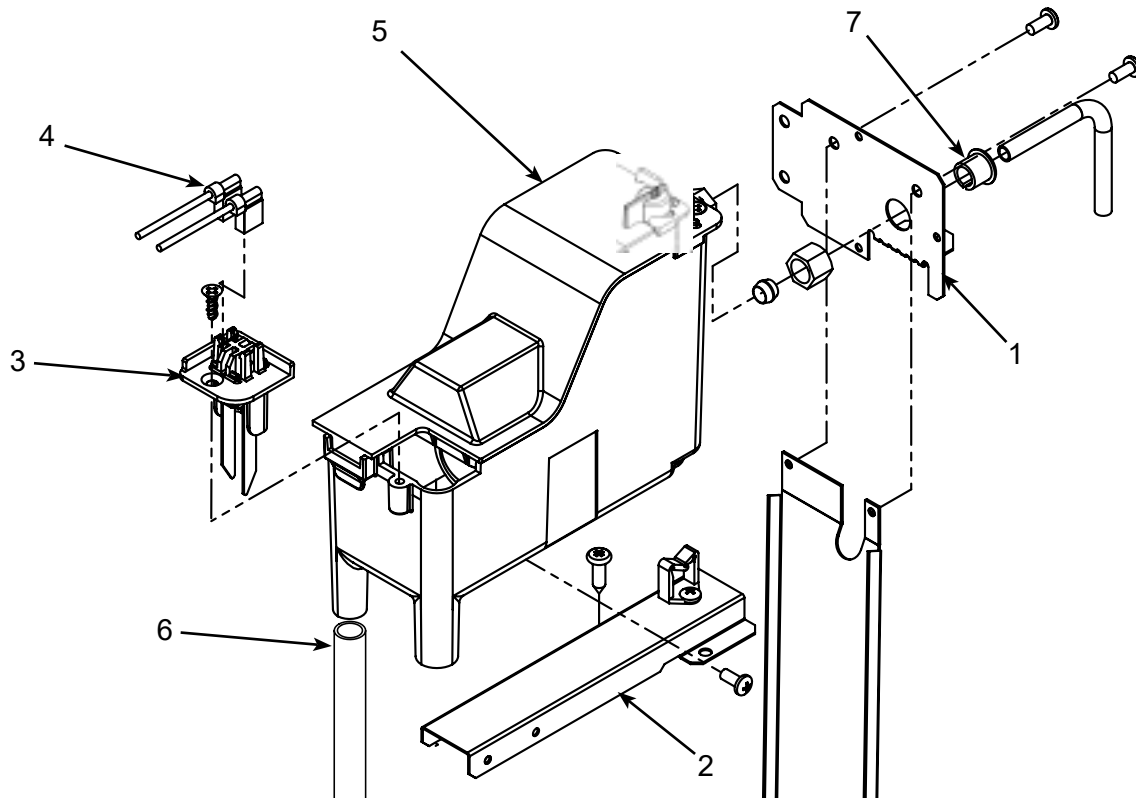
## Storage Bin and Ice Chute



| Item Number | Part Number | Description              | Item Number | Part Number | Description                        |
|-------------|-------------|--------------------------|-------------|-------------|------------------------------------|
| 1           | 03-1405-16  | Screw, 5/16-18           | 17          | 02-4375-02  | Support bracket, left              |
| 2           | 02-4628-01  | Ice sweep                |             | 02-4375-01  | Support bracket, right             |
| 3           | 02-4728-01  | Chute                    | 18          | 03-3836-03  | Screw                              |
| 4           | 02-4729-01  | Chute cover              | 19          | 02-4572-01  | Tube, reservoir to evap            |
| 5           | 03-1404-41  | Screw                    | 20          | 13-0674-09  | Tubing, 9 inches needed            |
| 6           | 03-3935-01  | Grommet                  |             |             |                                    |
| 7           | 03-3936-01  | Flanged bushing          | Kit         | A40144-021  | includes part numbers 3, 4, 15, 16 |
| 8           | 03-1405-07  | Cap screw                |             |             |                                    |
| 9           | 03-3937-01  | Vibration grommet        |             |             |                                    |
| 9a          | 03-1407-06  | Washer                   |             |             |                                    |
| 10          | A39681-001  | Mounting plate only      |             |             |                                    |
| 11          | 02-4582-01  | Shelf, gear and evap asy |             |             |                                    |
| 12          | A39792-001  | Drain                    |             |             |                                    |
| 13          | 13-0840-01  | Drain plug               |             |             |                                    |
| 14          | 03-3892-01  | Thumb screw              |             |             |                                    |
| 15          | 02-4730-01  | Compartment Cover        |             |             |                                    |
| 16          | 02-4602-01  | Insulation for item 15   |             |             |                                    |

# SRN110 Service Parts

## Reservoir, Water Sensor and Misc.



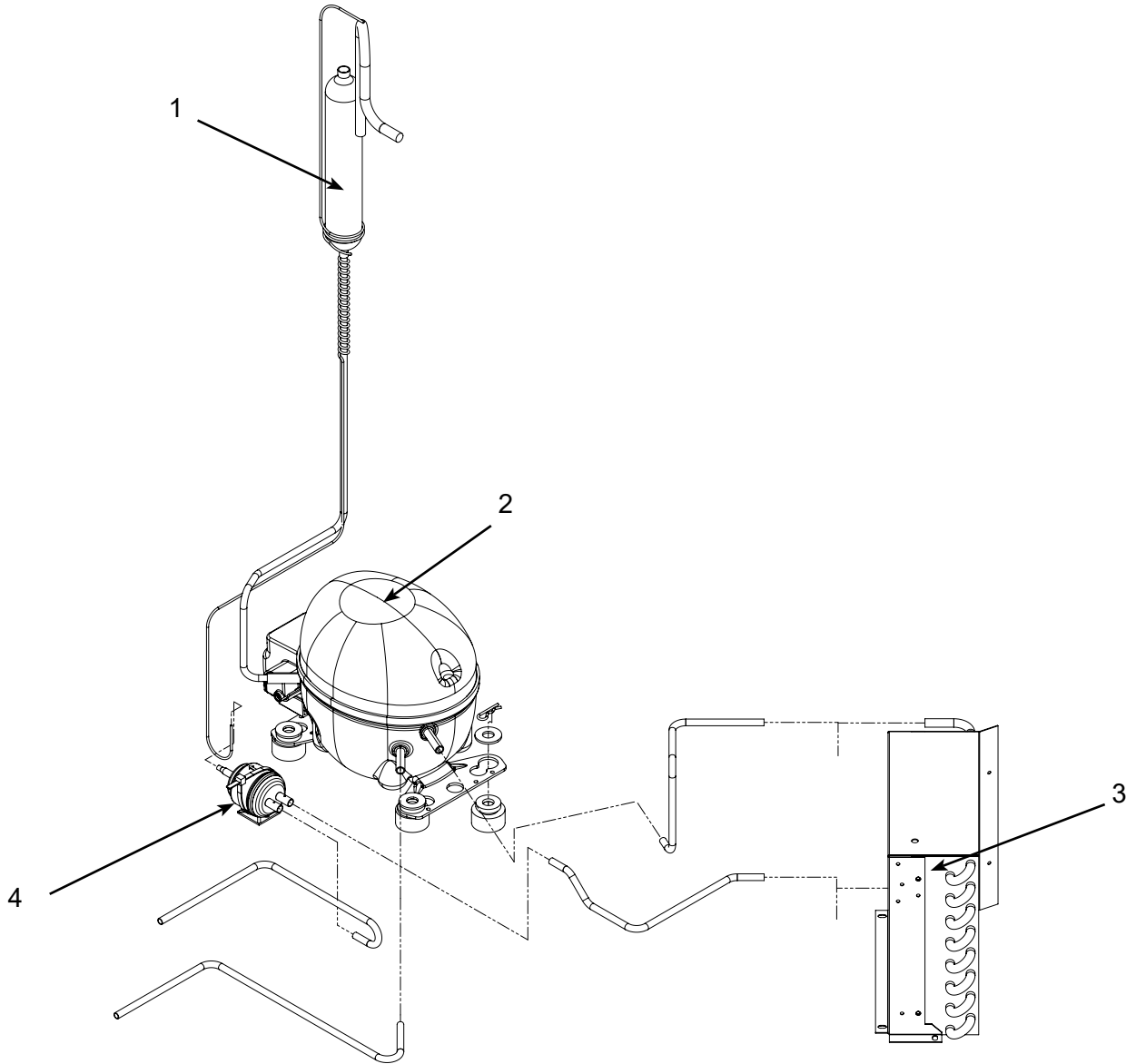
| Item Number | Part Number | Description                      |
|-------------|-------------|----------------------------------|
| 1           | A39693-001  | Bracket                          |
| 2           | A39775-001  | Reservoir mounting bracket       |
| 3           | A40666-001  | Water level sensor               |
| 4           | 12-3039-01  | Water sensor harness             |
| 5           | A40664-001  | Reservoir knob w/valve and cover |
| 5a          | 02-2217-02  | Float and valve only             |
| 6           | 13-0674-09  | Overflow hose - added 2014       |
| 7           | 12-1213-04  | Bushing                          |

**Not Shown:**

- 19-0664-12 12 pack of Pre-Mixed Squirt Bottle of Clear 1 scale remover
- 19-0653-12 Case of undiluted Clear 1 scale remover  
(To make Per-Mixed dilute 1.25 oz of Clear 1 to 16 oz warm water)

# SRN110 Service Parts

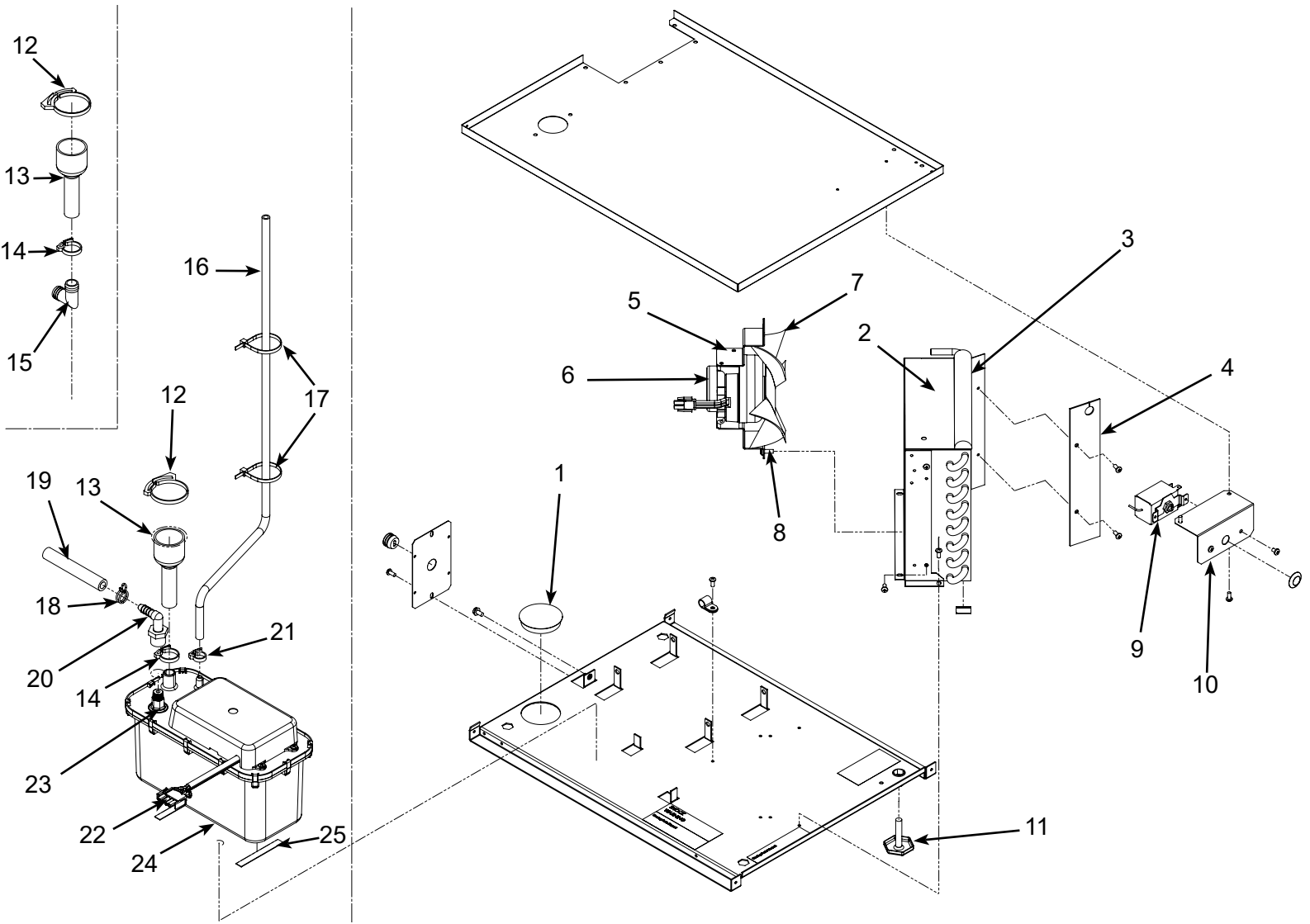
## Refrigeration



| Item Number | Part Number | Description                                     |
|-------------|-------------|-------------------------------------------------|
| 1           | A41554-001  | Heat exchange assy                              |
| 2           | 18-9000-21  | Compressor - includes overload, relay and drier |
| 2a          | 18-9000-51  | Overload                                        |
| 2b          | 18-9000-52  | PTCR                                            |
| 3           | 18-8940-01  | Condenser                                       |
| 4           | 16-1219-02  | Drier                                           |

# SRN110 Service Parts

## Under Bin Parts



| Item Number | Part Number | Description                   |
|-------------|-------------|-------------------------------|
| 1           | 02-1875-18  | Dome hole plug                |
| 2           | A39460-001  | Shroud                        |
| 3           | 13-0909-01  | Gasket - order 1 & cut to fit |
| 4           | 02-4450-01  | Air baffle                    |
| 5           | A39556-001  | Fan motor bracket             |
| 6           | 12-3024-01  | Fan motor                     |
| 7           | 02-4197-01  | Fan blade                     |
| 8           | 03-3818-01  | Screw                         |
| 9           | 11-0670-21  | Bin thermostat R290           |
| 10          | A39379-001  | Bin stat bracket              |
| 11          | 03-1608-01  | Leg leveler                   |
| 12          | 02-2814-13  | Hose clamp                    |
| 13          | 02-4412-02  | Drain hose                    |
| 14          | 02-2814-08  | Hose clamp                    |
| 15          | 16-0671-01  | Elbow                         |
| 16          | 02-5237-01  | Drain pump vent tube          |
| 17          | 02-1798-01  | Cable Tie                     |
| 18          | 02-0534-02  | Hose clamp                    |
| 19          | A37334-001  | Discharge hose                |

| Item Number | Part Number | Description         |
|-------------|-------------|---------------------|
| 20          | 02-3522-01  | Discharge elbow     |
| 21          | 02-2814-04  | Hose clamp          |
| 22          | 03-1736-01  | Cable mount         |
| 23          | 19-0672-01  | Thread sealant      |
| 24          | 12-3196-21  | Drain pump assembly |
| 25          | 19-0642-02  | Adhesive tape       |

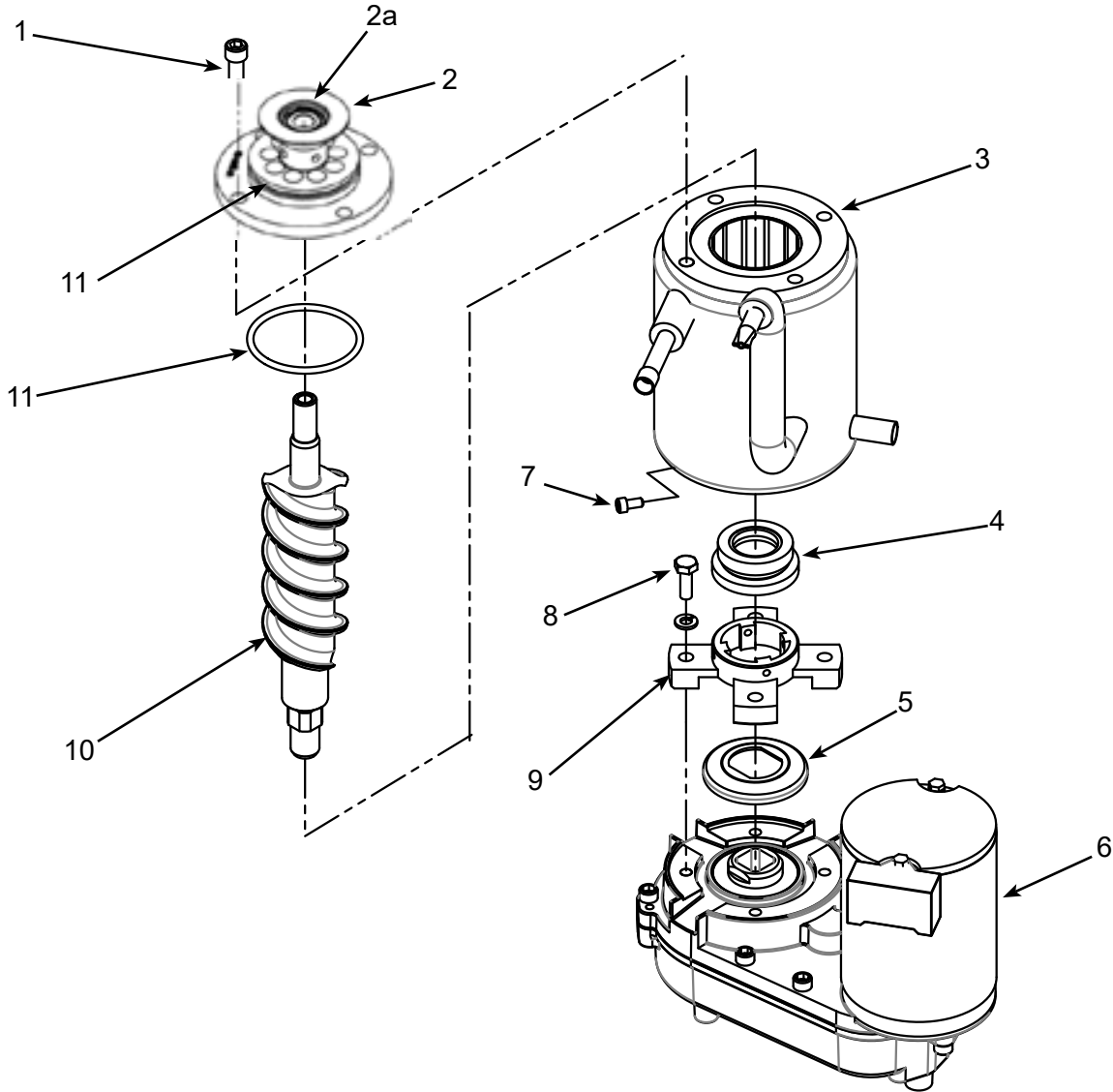
**Not Shown:**

|            |                             |
|------------|-----------------------------|
| 12-3209-01 | Pump harness (not pictured) |
|------------|-----------------------------|

Kit KPMP Use to convert gravity drain to pump drain. Includes drain pump assembly 12-3196-21

# SRN110 Service Parts

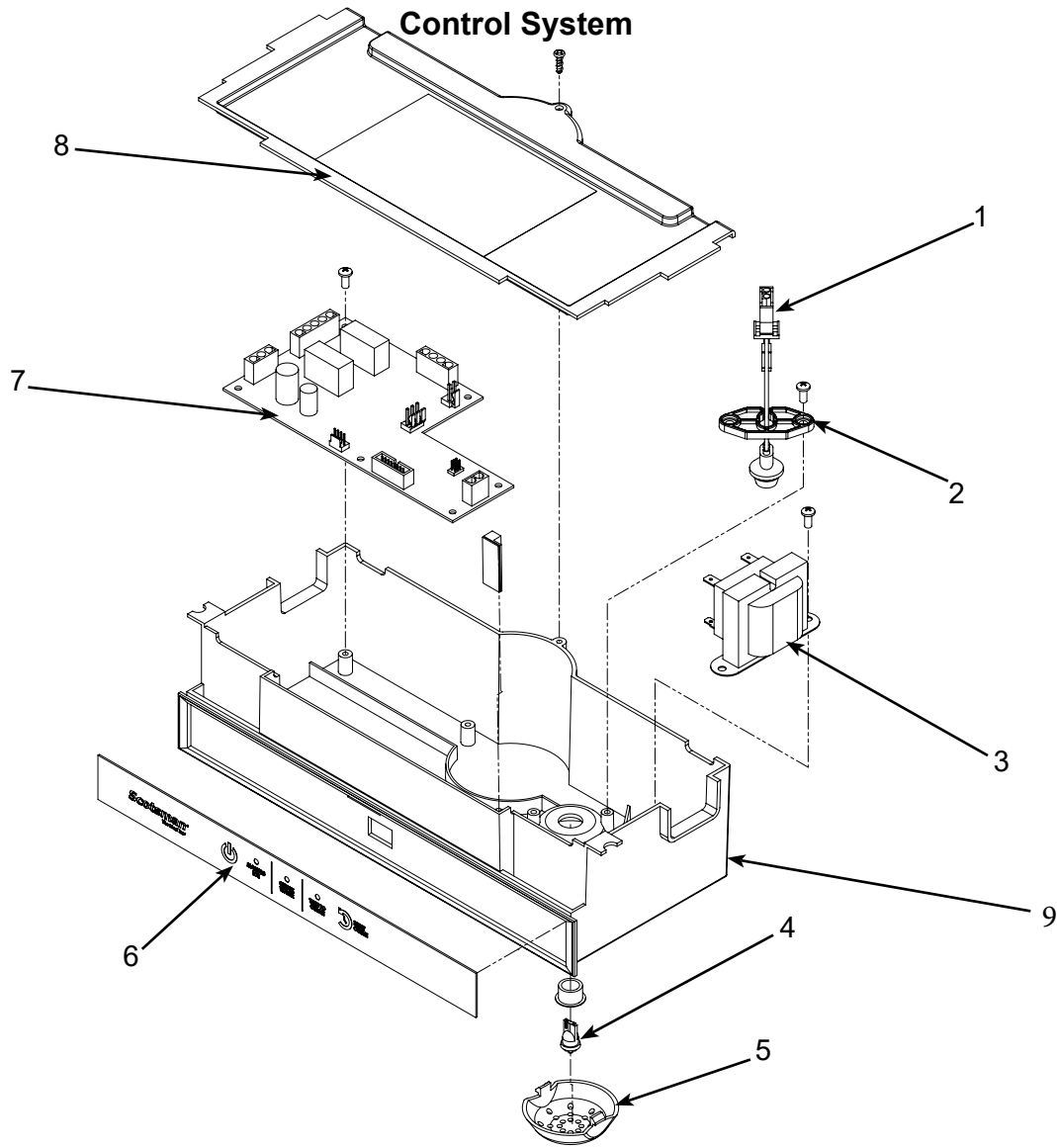
## Ice Making Section



| Item Number | Part Number | Description                             |
|-------------|-------------|-----------------------------------------|
| 1           | 03-1544-14  | Cap screw                               |
| 2           | A40385-001  | Breaker w/bearing                       |
| 2a          | 02-4846-01  | Bearing only                            |
| 3           | 02-4558-01  | Evaporator                              |
| 4           | 02-4599-21  | Water seal                              |
| 5           | 02-4662-01  | Water shed                              |
| 6           | 02-4580-23* | Gear reducer and motor also includes #5 |
| 7           | 03-1544-04  | Cap screw                               |
| 8           | 03-1405-54  | Cap screw                               |
| 9           | 02-4625-01  | Adapter                                 |
| 10          | 02-4861-01  | Auger                                   |
| 11          | 13-0617-58  | O-ring                                  |

\* Must connect wires correctly. See label on motor.

# SRN110 Service Parts



| Item Number | Part Number | Description            |
|-------------|-------------|------------------------|
| 1           | 12-3076-01  | Bin light harness      |
| 2           | 02-4994-01  | Bulb retaining bracket |
| 3           | 12-2924-01  | Transformer            |
| 4           | 12-3077-01  | Bulb                   |
| 5           | 02-4380-01  | Light cover            |
| 6           | 11-0669-01  | Control panel overlay  |
| 7           | 11-0664-21  | Controller             |
| 8           | 02-4386-01  | Cover                  |
| 9           | 02-4382-01  | Box only               |

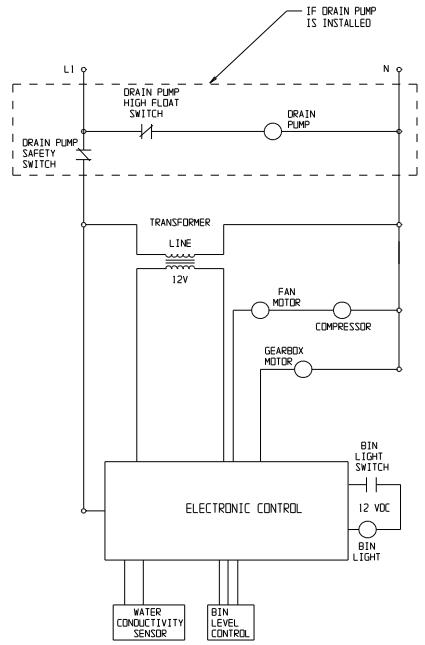
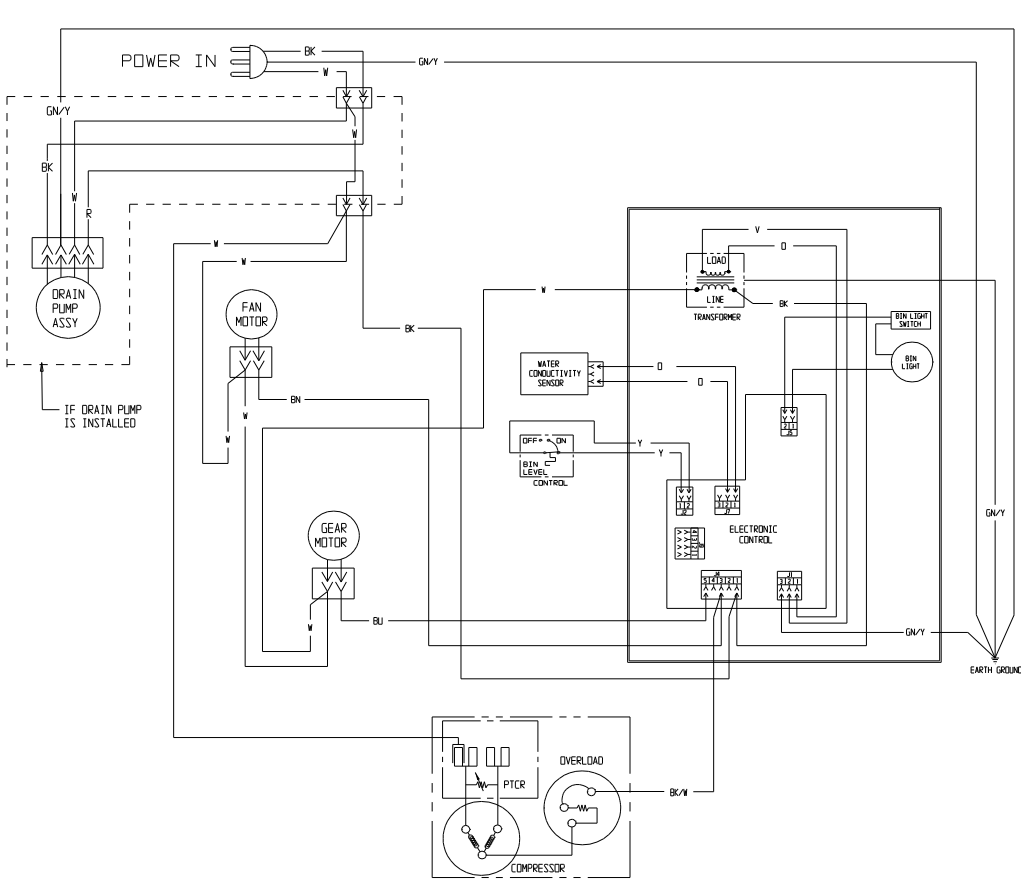
**Not Shown:**

12-1638-21 Power cord

# SRN110 Service Parts

## Wiring Diagram

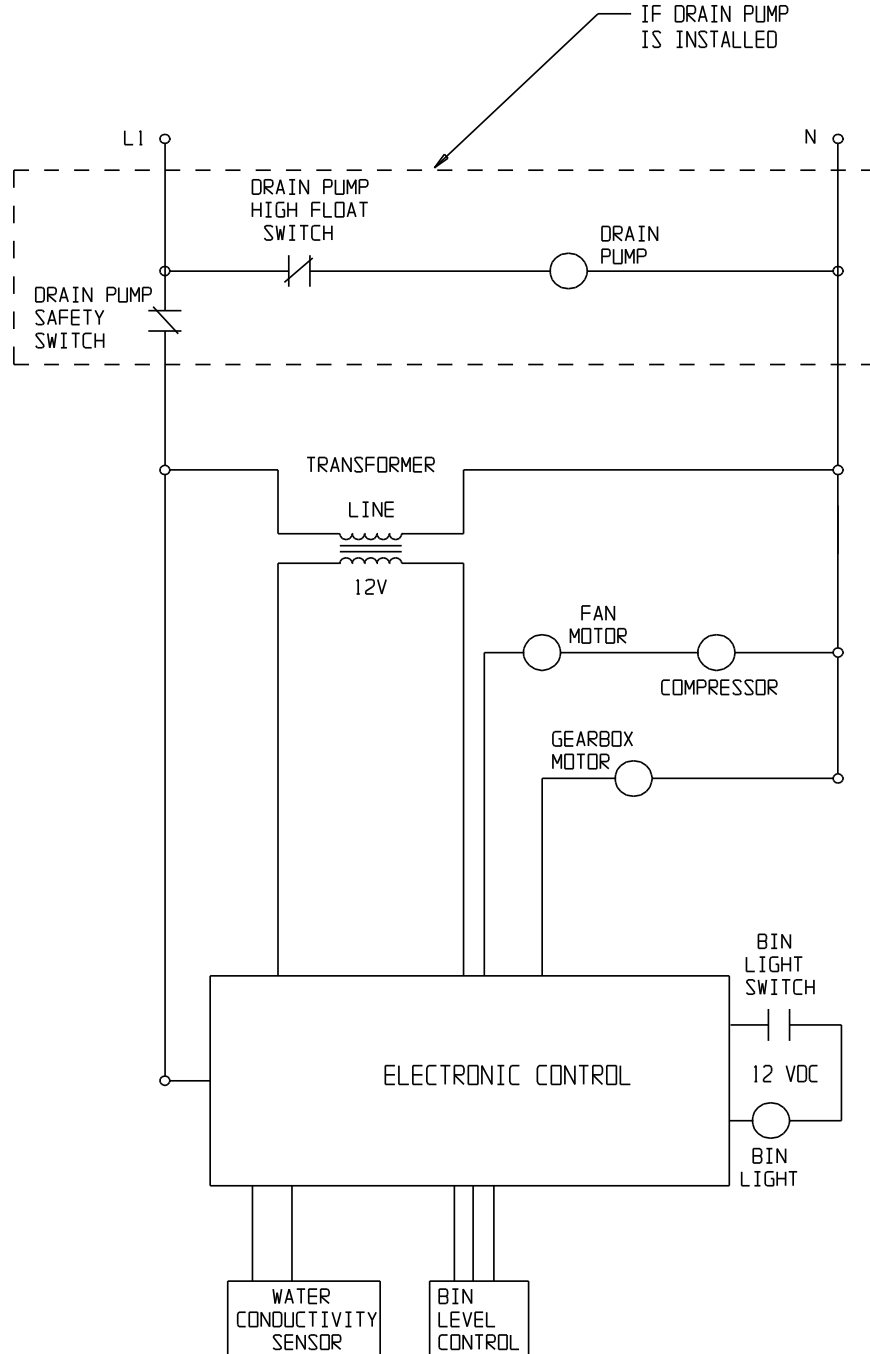
17-3945-01



SWITCHES ON THIS UNIT SHOWN IN FREEZE CYCLE WITH DRAIN PUMP IN OPERATION AND BIN DOOR CLOSED

# SRN110 Service Parts

## Schematic Diagram



SWITCHES ON THIS UNIT  
SHOWN IN FREEZE CYCLE  
WITH DRAIN PUMP IN  
OPERATION AND BIN  
DOOR CLOSED

**SCOTSMAN ICE SYSTEMS**  
**101 Corporate Woods Parkway,**  
**Vernon Hills, IL 60061**  
**[www.scotsman-ice.com](http://www.scotsman-ice.com)**